

## Overview

- 2 mm
- PNP make function (NO)
- cable, 2 m
- -25 ... 75 °C
- IP 67



*Picture similar*



## Technical data

### General data

Mounting type	Flush
Nominal sensing distance S <sub>n</sub>	2 mm
Hysteresis	2 ... 20 % of S <sub>r</sub>
Output indicator	LED red

### Electrical data

Switching frequency	< 5 kHz
Voltage supply range +V <sub>s</sub>	6 ... 30 VDC
Current consumption max. (no load)	12 mA
Output circuit	PNP make function (NO)
Voltage drop V <sub>d</sub>	< 2 VDC
Output current	< 100 mA

### Electrical data

Short circuit protection	Yes
Reverse polarity protection	Yes

### Mechanical data

Type	Rectangular
Material (sensing face)	PBT
Housing material	Die-cast zinc nickel plated
Dimension	8 mm
Housing length	16 mm
Connection types	Cable, 2 m

### Ambient conditions

Operating temperature	-25 ... +75 °C
Protection class	IP 67

## Remarks

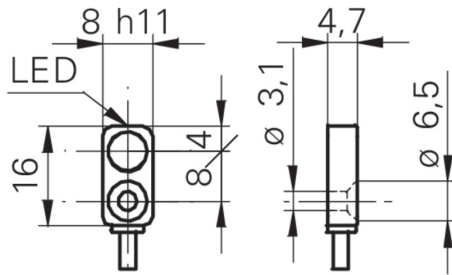
- Extra flat housing
- Through bore for M3 screw

## IFFM 08P17A6/L

Inductive proximity switch - subminiature

Article number: 10142377

### Dimension drawing



### Connection diagram

