

Stampa PDF

Codice del prodotto: 07.312.9055.0

Piastrina di chiusura APFN 4 D2/2



| | |
|---------------------|---------------|
| Codice del prodotto | 07.312.9055.0 |
| EAN | 4015573752740 |
| Unità | 10 |

Dati tecnici

Generale

| | |
|--|---------|
| Colore | grigio |
| Tipo di piastrina di chiusura | sì |
| Esecuzione piastrina intermedia | No |
| Spessore | 1,5 mm |
| Snap in | sì |
| Classe di infiammabilità del materiale isolante secondo UL94 | V0 |
| Lunghezza | 82,2 mm |

Classificazione

| | |
|------------|----------|
| ECLASS 11 | |
| ECLASS 8.1 | 27141133 |
| ETIM 7.0 | |
| ETIM 6.0 | EC000886 |
| ETIM 5.0 | EC000886 |
| ETIM 4.0 | EC000886 |
| ETIM 3.0 | EC000886 |

Conformità del prodotto

| | |
|------------------------------|----------|
| ROHS conformity status | Conforme |
| REACH-SVHC conformity status | Conforme |

A

B

C

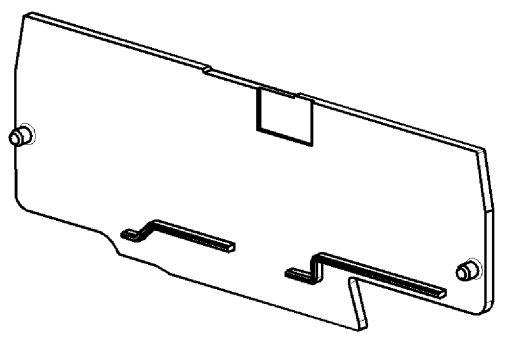
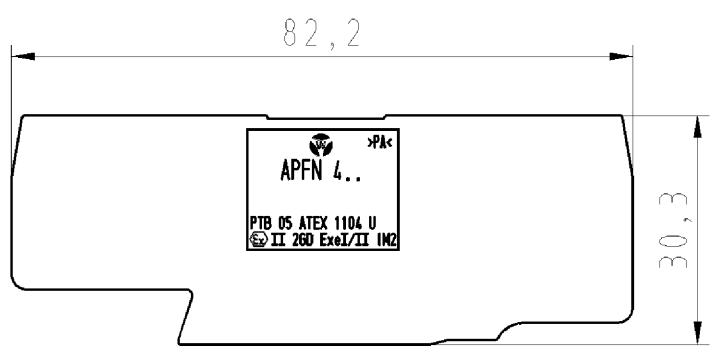
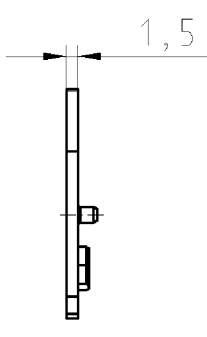
D

E

F

☐ These dimensions will be especially checked at delivery
☐ Only inspection dimensions
With /E marked dimensions are only valid for internal use

☐ Diese Maße werden bei Abnahme besonders geprüft
☐ Ausschließlich Prüfmaße
Mit /E gekennzeichnete Maße sind nur für interne Zwecke gültig



Weitere Daten siehe Katalog
further data see catalog

| Teile-Nr./part-nr. | Farbe/colour | Typ/type |
|--------------------|--------------|---------------|
| 07.312.9055.0 | grau/grey | APFN 4D2/2/35 |
| 07.312.9055.6 | blau/blue | APFN 4D2/2/35 |
| 07.312.9055.7 | grün/green | APFN 4D2/2/35 |

Tolerierung nach DIN 7167/Tolerance system acc. to DIN 7167. (This DIN-standard describes the envelope principle. According to the envelope principle the deviations of form and parallelism are limited by the size tolerances). ja/yes ☒ Stoffverbots- und Deklarationsliste nach UU-TQM-05/03 ist einzuhalten. Conformity with Wieland document UU-TQM-05/03 (list of prohibited / declarable hazardous substances) to be declared!

Freitoleranz nach General tolerance CAD - Zeichnung, keine manuellen Änderungen CAD - drawing, no manual modifications allowed 1.Verwendung: First Use: Blatt: 1 von 1 Sheet: 1 of 1

| | | | | | | | | | |
|-------------------|-------------------------------|---------------|--------------------|---------------------------------|-----------------|-----------------|-------------------------------|-------|--|
| | / | | Werkstoff/Material | 2006 | Tag/Date | Name | Zeichnung Nr./Drawing No. | Index | |
| | / | | | gezeichnet drawn | 03.08. | Schmitt J. | | | |
| | / | | | geprüft checked | - | - | | | |
| | / | | | Normgepr. Stand. check | - | - | | | |
| | / | Maßstab/Scale | 1:1 | Maße in mm/Dimensions are in mm | | | | | |
| | / | Vol. | | mm ³ | Offl./Surf. | mm ² | Ersatz für/Replacement for: - | | |
| | / | | wieland | Type | Benennung/Title | | | | |
| | / | | | ABSCHLUSSPLATTE | | | | | |
| Index | Datum / Blatt Date / Sheet | | | für/for WKFN 4 D2/2/35 | | | | | |
| Änderung/Revision | | | | end plate | | | | | |

Weitergabe sowie Vervielfältigung dieses Dokuments, Verwertung und Mitteilung seines Inhalts sind verboten, soweit nicht ausdrücklich gestattet. Die Reproduktion, Distribution und Utilization of this document as well as the communication of its contents to others without express authorization is prohibited.

073129055001K_4 CADW1042 Schmitt 2006-08-03T10:49:45 1.000