

Stampa PDF

Codice del prodotto: 70.320.2428.0

Custodia fissa BAS GUT GA 24 A



| | |
|---------------------|---------------|
| Codice del prodotto | 70.320.2428.0 |
| EAN | 4015573220119 |
| Unità | 1 |

Approvazioni



Dati tecnici

Generale

| | |
|--|------------------------|
| Materiale della custodia | alluminio |
| Colore | grigio |
| Superficie | Verniciatura a polveri |
| Grado di protezione (IP) | IP54 |
| Resistenza a UV | sì |
| Classe di infiammabilità del materiale isolante secondo UL94 | Altro |
| Range di temperatura di esercizio minima | -40 °C |
| Range di temperatura di esercizio massima | 120 °C |

Esecuzione

| | |
|---------------------------|------------------------------------|
| Dimensione | 24 |
| Esecuzione | Montaggio (imbocco) |
| Dispositivo di bloccaggio | Due leve di bloccaggio trasversali |
| Ingresso cavo | senza |
| Tipo di imbocco cavo | senza |
| Con pressacavo | No |
| Dimensione filettatura PG | |
| Coperchio a cerniera | No |
| Esecuzione EMC | No |
| Lunghezza | 140 mm |
| larghezza | 57 mm |
| Altezza | 28 mm |

Classificazione

| | |
|------------|----------|
| ECLASS 11 | |
| ECLASS 8.1 | 27440202 |
| ETIM 7.0 | |

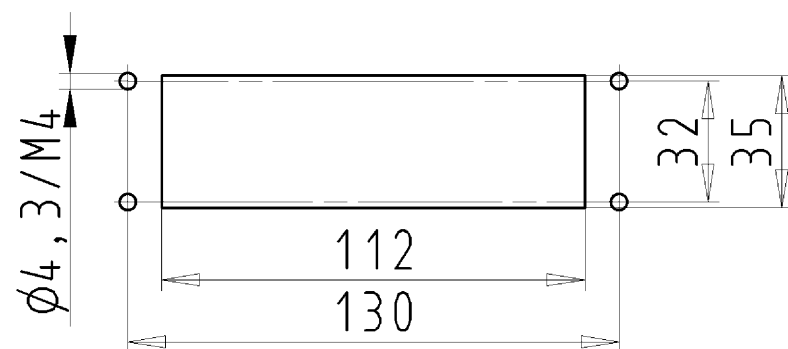
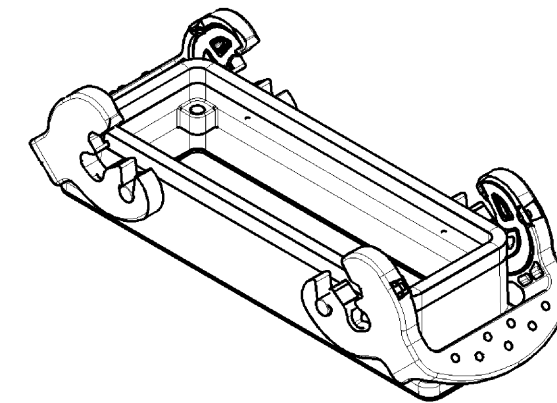
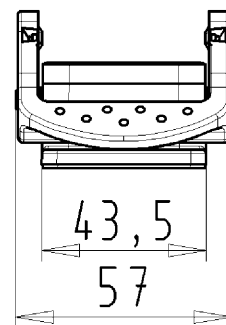
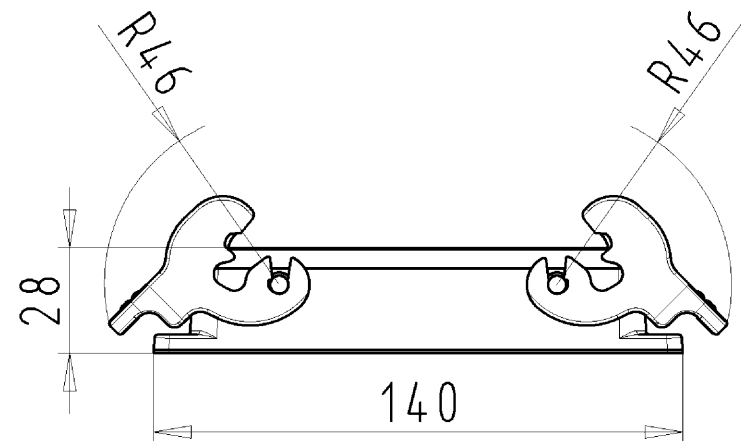
| | |
|----------|----------|
| ETIM 6.0 | EC000437 |
| ETIM 5.0 | EC000437 |
| ETIM 4.0 | EC000437 |

Conformità del prodotto

| | |
|------------------------------|----------|
| REACH-SVHC conformity status | Conforme |
|------------------------------|----------|

Controparte



| Codice del prodotto: | Designazione tipo/articolo: | Descrizione: |
|----------------------|--------------------------------------|--------------|
| 70.100.2453.3 | Adattatore BAS BAS LL 24 4,0 50 | |
| 70.100.2453.4 | Adattatore BAS BAS KL 24 4,0 50 | |
| 70.105.2453.3 | Adattatore BAS BAS LR 24 4,0 50 | |
| 70.105.2453.4 | Adattatore BAS BAS KR 24 4,0 50 | |
| 70.110.2453.3 | Adattatore BAS SAS LL 24 4,0 50 | |
| 70.110.2453.4 | Adattatore BAS SAS KL 24 4,0 50 | |
| 70.115.2453.3 | Adattatore BAS SAS LR 24 4,0 50 | |
| 70.115.2453.4 | Adattatore BAS SAS KR 24 4,0 50 | |
| 70.101.2453.0 | Adattatore BAS BAF KL 24 2,5 50 | |
| 70.106.2453.0 | Adattatore BAS BAF KR 24 2,5 50 | |
| 70.111.2453.0 | Adattatore BAS SAF KL 24 2,5 50 | |
| 70.116.2453.0 | Adattatore BAS SAF KR 24 2,5 50 | |
| 70.300.2440.0 | Inserto femmina BAS BUS 24 2,5 50 | |
| 70.301.2440.0 | Inserto femmina BAS BUS 24 2,5 50 AU | |
| 70.302.2440.0 | Inserto femmina BAS BUS OD 24 2,5 50 | |
| 70.310.2440.0 | Inserto spina BAS STS 24 2,5 50 | |
| 70.311.2440.0 | Inserto spina BAS STS 24 2,5 50 AU | |
| 70.312.2440.0 | Inserto spina BAS STS OD 24 2,5 50 | |
| 70.500.2453.0 | Inserto femmina BAS BUF 24 2,5 50 | |
| 70.510.2453.0 | Inserto spina BAS STF 24 2,5 50 | |
| 70.700.2458.0 | Inserto femmina BAS BUC 24 50 | |
| 70.710.2458.0 | Inserto spina BAS STC 24 50 | |
| 70.800.4656.0 | Inserto femmina BAS BUCK 46 50 PC | |
| 70.810.4656.0 | Inserto spina BAS STCK 46 50 | |
| 70.400.1040.0 | Inserto femmina BAS BUS 10 2,5 64 | |
| 70.410.1040.0 | Inserto spina BAS STS 10 2,5 64 | |
| 70.400.1640.0 | Inserto femmina BAS BUS 16 2,5 64 | |
| 70.410.1640.0 | Inserto spina BAS STS 16 2,5 64 | |
| 72.300.2453.0 | Inserto femmina BAS BUS 24 2,5 69 | |
| 72.310.2453.0 | Inserto spina BAS STS 24 2,5 69 | |
| 72.700.2458.0 | Inserto femmina BAS BUC 24 69 | |
| 72.710.2458.0 | Inserto spina BAS STC 24 69 | |
| 70.506.1053.0 | Inserto femmina BAS BUF 10 2,5 83 AG | |
| 70.516.1053.0 | Inserto spina BAS STF 10 2,5 83 AG | |
| 73.800.0853.0 | Inserto femmina DD BUC 108 1,5 25 | |
| 73.810.0853.0 | Inserto spina DD STC 108 1,5 25 | |
| 70.405.2453.0 | Inserto femmina BAS BUP 24 2,5 50 AG | |
| 70.415.2453.0 | Inserto spina BAS STP 24 2,5 50 AG | |
| 72.206.1253.0 | Inserto femmina POW BUS 4/8 NL BB AG | |
| 72.216.1253.0 | Inserto spina POW STS 4/8 NL BB AG | |

Bohrbild
/Cut out

| | |
|--------------------------------|-----------------|
| 70.320.2428.0 | BAS GOT GA 24 A |
| Bestellnummer /Order number | Typ /Type |

Weitere Daten siehe KATALOG oder eKatalog.
Additional data see CATALOG or eCatalog.

www.wieland-electric.com
www.eshop.wieland-electric.com

| | | | | | | | | | | | | | |
|---|-------------------------------|---|-----------------------------|---|---------------------------|---|------------|--|-------|--|--|-------------------------------|--|
| Tolerierung Size ISO 14405(E)/Tolerance system Size ISO 14405(E). (This ISO-standard describes the envelope principle. According to the envelope principle the deviations of form and parallelism are limited by the size tolerances). | | | | | | ja/yes <input checked="" type="checkbox"/> Stoffverbots- und Deklarationsliste nach UU-TOM-05/03 ist einzuhalten. Conformity with Wieland document UU-TOM-05/03 (list of prohibited / declarable hazardous substances) to be declared! | | | | | | | |
| Freitoleranz nach - - - - - General tolerance | | | | CAD - Zeichnung, keine manuellen Änderungen CAD - drawing, no manual modifications allowed | | | | 1. Verwendung: - - - - First Use: | | | | Blatt: 1 von 1 Sheet: of 1 | |
| | / |  | Werkstoff/Material | | 2013 | Tag/Date | Name | Zeichnung Nr./Drawing No. 70.320.2428.0 13K | Index | | | | |
| | / | | Aluminium | | gezeichnet drawn | 17.06. | Duetsch T. | | | | | | |
| | / Maßstab/Scale | | beschichtet/coated | | geprüft checked | - | - | | | | | | |
| | / 1:2 | | grau/grey | | Normgepr. Stand. check | - | - | | | | | | |
| Maße in mm/Dimensions are in mm | | | | | | | | | | | | | |
| | / | Vol. mm³ | | Ofl./Surf. mm² | | Ersatz für/Replacement for: - | | | | | | | |
| | / |  | wieland | | | Type revos BASIC | | Benennung/Tittle GEHAEUSEUNTERTEIL Baugröße 24 offen OPEN HOUSING size 24 | | | | | |
| | / | | | | | | | | | | | | |
| Index | Datum / Blatt Date / Sheet | | | | | | | | | | | | |
| Änderung/Revision | | | Elektrische Verbindungen | | | | | | | | | | |

Weitergabe sowie Vervielfältigung dieses Dokuments, Verwertung und Mitteilung seines Inhalts sind verboten, soweit nicht ausdrücklich gestattet.
The reproduction, distribution and utilization of this document as well as the communication of its contents to others without express authorization is prohibited.

| | | | | |
|-----------------|----------|----------|---------------------|-------|
| 703202428013K_2 | CADW3028 | Treschan | 2013-09-20T11:19:24 | 1.000 |
|-----------------|----------|----------|---------------------|-------|